

ISAAC

INTERNATIONAL

STUDY OF

ASTHMA AND

ALLERGIES IN

CHILDHOOD

NEWSLETTER – MARCH 2003

Welcome to the first ISAAC Newsletter for the year 2003.

I am happy to report that the ISAAC International Data Centre (IIDC) team have returned from their holiday and are all working very hard on Phase Three Data and Methodology checks. We have had a lovely long summer in New Zealand, but the holiday part now seems far away!

To date the IIDC has received registrations from 260 centres from 99 countries. This is extraordinary commitment to ISAAC – thank you for your participation. We have a mystery prize for the 100th country!

You will be aware that we have a stringent process for data and methodology checks, and thank you for your cooperation with this. We have an outline of the process on page 3. Your conscientiousness in helping us with this task is very much appreciated.

Once the data checks and centre reports for all centres are completed we will begin the analysis.

We look forward to ongoing communication with you.

Thank you for your goodwill in undertaking and completing this project with us.

Yours sincerely

Innes Asher

CORRESPONDENCE TO:

Professor Innes Asher

ISAAC International Data Centre
Department of Paediatrics
Faculty of Medical & Health Sciences
University of Auckland
Private Bag 92 019
Auckland
NEW ZEALAND

Ph: 64 9 373 7599 ext 86451
Fax: 64 9 373 7602
Email: mi.asher@auckland.ac.nz
Website: <http://isaac.auckland.ac.nz>

NEWSLETTER CONTENTS

- ◆ Editorial
- ◆ ISAAC Member Profile
 - Professor Richard Beasley
- ◆ ISAAC Phase Three
- ◆ Abstract
- ◆ ISAAC Notices
 - ISAAC Accolades
 - Ulm University

Professor Innes Asher ONZM

On behalf of the ISAAC International Data Centre and Steering Committee

ISAAC PROFILE

Professor Richard Beasley
MBChB, FRACP, DM, FAAAAI



Richard Beasley lives with his family in Wellington, New Zealand. A fifth generation New Zealander, Richard spent his childhood in Wellington before studying medicine at the University of Otago in Dunedin. Since then he has spent his time working in either Wellington or Southampton in the United Kingdom.

In 2001, he established the Medical Research Institute of New Zealand and accepted a position as Visiting Professor at the University of Southampton. This has allowed him to join back up with Stephen Holgate in Southampton and remain living in New Zealand. His research interests in the field of asthma include management and epidemiology.

His roles in ISAAC are:

- ♦ Steering Committee
- ♦ Executive Committee member
- ♦ Phase One Coordinator
- ♦ Phase Three Coordinator
- ♦ Interim Regional Coordinator for North America

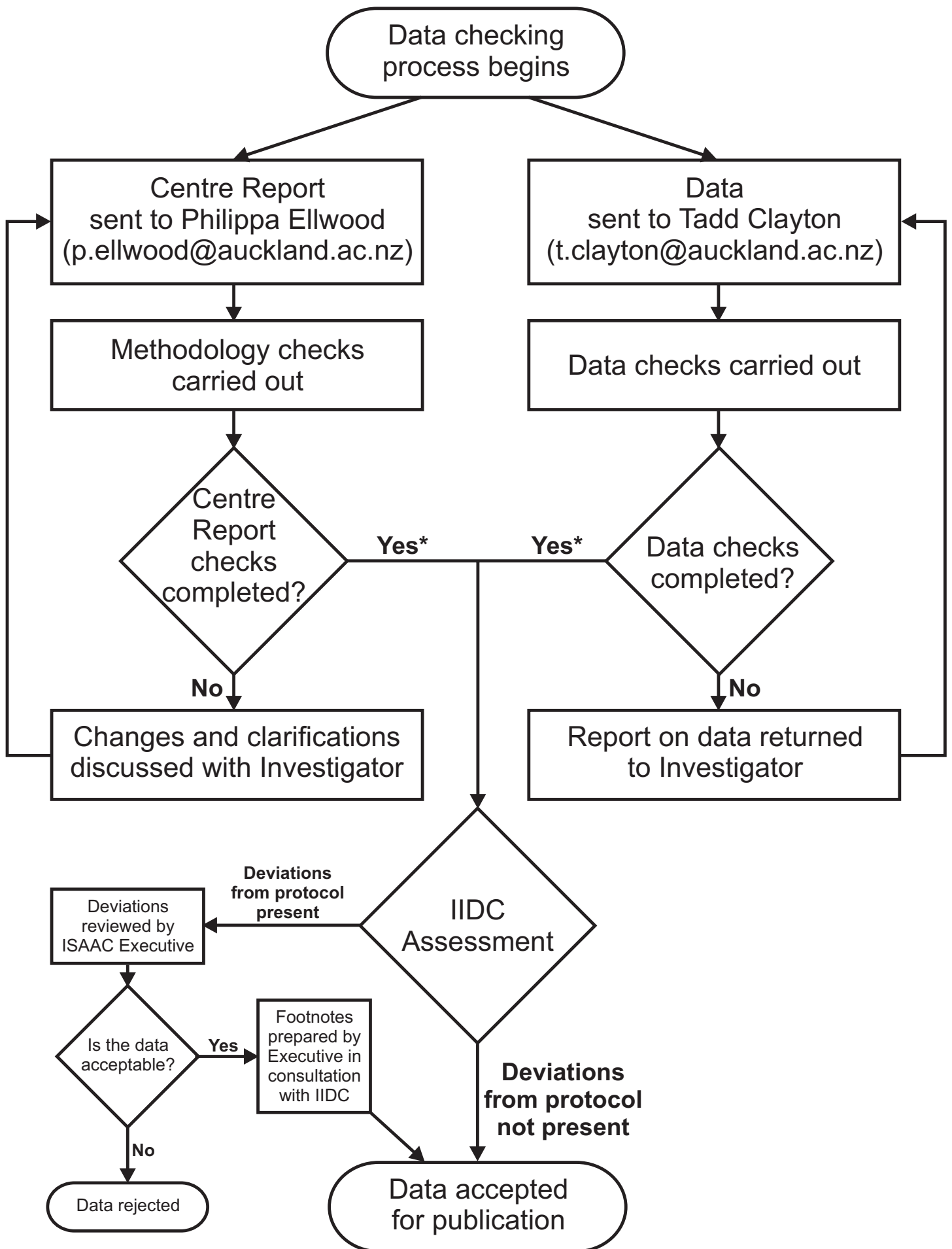
STOP PRESS IIDC

We are very proud of our Professor Richard Beasley who has achieved the following awards MRC (NZ) Training Fellowship, MRC (NZ) / Wellcome Trust Research Fellowship, University of Southampton Hartley Visiting Award; Aventis Medal, Thoracic Society of Australia & New Zealand and most recently the World Health Lung Award from the American Thoracic Society (see page 7).

ISAAC PHASE THREE REGIONAL COORDINATORS

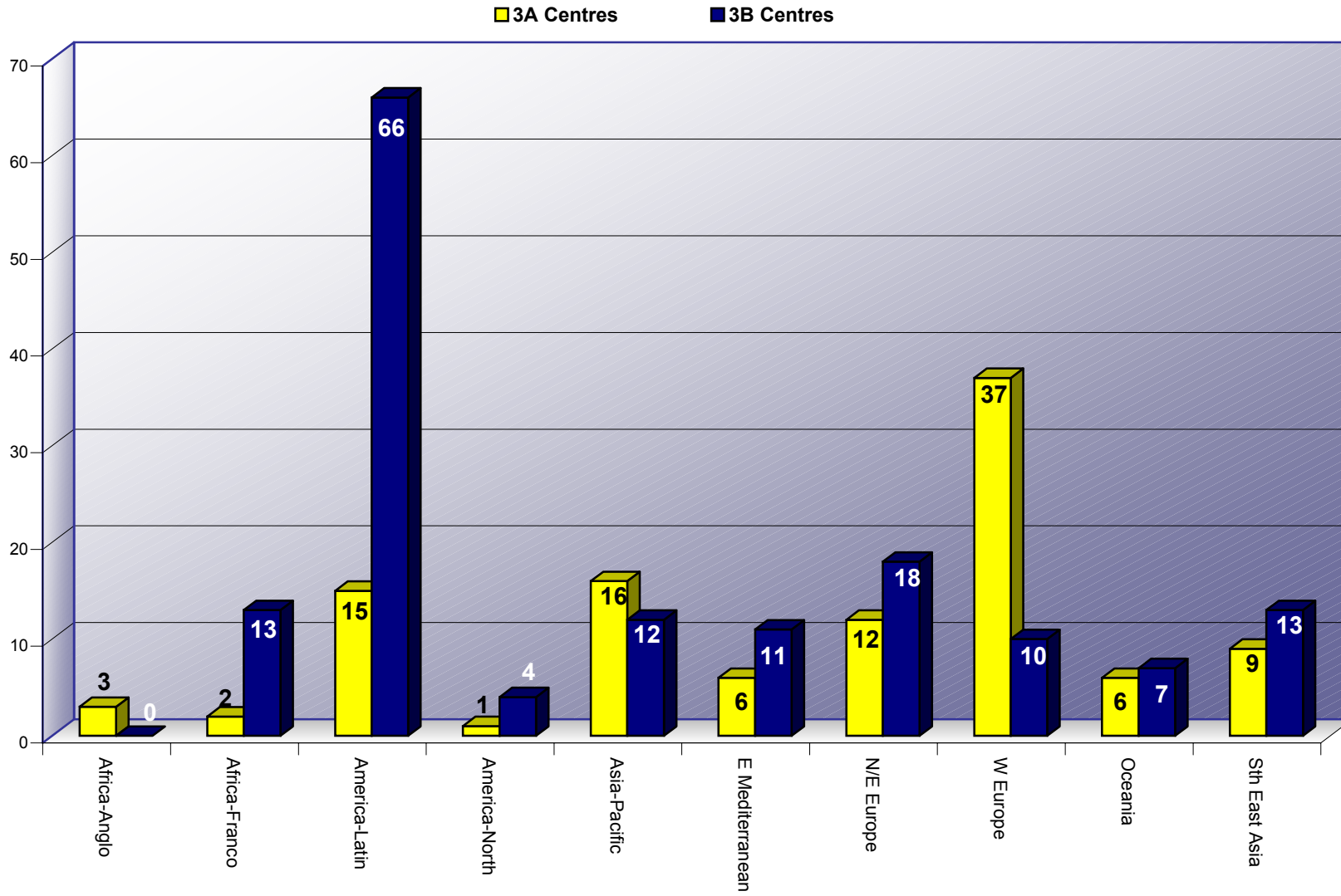
<u>ISAAC Region and Coordinator</u>	<u>Email Address</u>	<u>Facsimile Number</u>
Africa/Anglophone Dr Joseph A. Odhiambo	jodhiambo@cdcnairobi.mimcom.net	254 2 271 3008
Africa/Francophone Prof Nadia Ait-Khaled	NaitKhaled@iuatld.org or Union@iuatld.org	33 1 4329 9087
America Latin Prof Javier Mallol	jmallol@lauca.usach.cl	56 2 331 0375
America North <i>Interim arrangement please contact:</i> Prof Richard Beasley	richard.beasley@mrinz.ac.nz	64-4-472 9199
Asia-Pacific & South East Asia Dr Chris Lai	keilai@netvigator.com	852 2522 2188
Eastern Mediterranean Dr Stephen Montefort	stevemonte@waldonet.net.mt	356 482 800
Europe Western Prof Dr Ulrich Keil	keilu@uni-muenster.de	49 251 835 5300
Europe/Northern & Eastern Prof Bengt Björkstén	bengt.bjorksten@cfa.ki.se or evi.werendel@imm.ki.se	46 8 315 823
India Sub-continent Dr Jayant R. Shah	plmlab@jaslokhospital.net or jaslok@vsnl.com	91 22 495 0508
Oceania Dr Sunia Foliaki	S.Foliaki@massey.ac.nz	64 4 3800 613

ISAAC International Data Centre (IIDC) Phase Three Data and Methodology Checks



*** Methodology and data checks must both be complete before proceeding to the next step**

Phase Three Registered Centres Update as at March 2003



ABSTRACTS

The Journal of Allergy and Clinical Immunology

Volume 109(5) Supplement May 2002 pp S482-S489

The burden of asthma with specific reference to the United States

[Integration of basic science, clinical and economic research in pharmacologic decision- making: Optimizing value in asthma management]

Beasley, Richard MBChB, FRACP, DM, FAAAAI

ABSTRACT

During the second half of the 20th century, the increasing prevalence, morbidity, economic burden, and, in some countries, mortality from asthma have generated worldwide concern. The prevalence in the United States and other English-speaking countries is higher than that in most other countries, but worldwide variations cannot be explained by current knowledge of recognized risk or protective factors. According to hospital admission rates, asthma morbidity rates have also risen throughout the world during the past 40 years. These trends are likely due to many different factors, including an increase in the prevalence of severe asthma. Asthma mortality rates gradually declined in the United States during the 1960s and 1970s but have exhibited a substantial, progressive increase during the past 20 years. This trend stands in contrast to those in most other western countries, where asthma mortality rates have generally been decreasing during the 1990s. In both western and developing countries, the considerable economic burden of asthma disproportionately affects individuals with severe disease. This observation illustrates the potential for reducing the costs associated with asthma through management approaches that have been proven to reduce morbidity and mortality. (J Allergy Clin Immunol 2002;109:S482-9.)

ANNOUNCEMENTS

CONGRATULATIONS TO RICHARD BEASLEY

NEW ZEALAND FELLOW WINS AMERICAN AWARD

Professor Richard Beasley, a Fellow of the College in New Zealand, has been awarded the American Thoracic Society World Lung Health Award 2002. This award is given in recognition of significant contributions to world lung health in the area of basic or clinical research, delivery of health care, continuing education or care of patients with lung diseases. Professor Beasley is Visiting Professor at the University of Southampton and Founder of the Medical Research Institute in Wellington.



Announcement in Newsletter of Royal Australasian College of Physicians December 2002

CONGRATULATIONS TO INNES ASHER

If there is one name we all associate with ISAAC it is Innes Asher. As a founder member and chair of the ISAAC Steering Committee, her international reputation in the fields of paediatric pulmonology and asthma epidemiology has grown as the global ISAAC collaboration has flourished. The success of ISAAC owes much to the enthusiasm and hard work of Innes and the dedicated team which she has built up at the ISAAC International Data Centre. Over the same period, as a respiratory paediatrician at Starship Children's Hospital in Auckland, Innes has also found time to lead the development of paediatric respiratory medicine in New Zealand.

It is therefore a pleasure to report that her contributions both locally and internationally have been recognised in two ways. Firstly, she has been promoted to Chair in Paediatrics, with responsibilities for leading the discipline of clinical and academic paediatrics at all levels within the School of Medicine in Auckland. Secondly, Innes was appointed an Officer of the New Zealand Order of Merit in the New Year Honours List. This is a highly prestigious national award, reserved for those attaining excellence in any discipline, not just in medicine. Only 27 ONZM awards were made this year, so this is truly a personal and professional honour.

On behalf of everyone in ISAAC, we send our most highly deserved congratulations to you - Professor Innes Asher, ONZM. *

(* and, dear reader, if your next letter from the ISAAC International Data Centre bears some unusual letters and titles, now you know what they mean!)

Professor David Strachan
ISAAC Executive
d.strachan@sghms.ac.uk

First Announcement

**14TH INTERNATIONAL SUMMER SCHOOL OF EPIDEMIOLOGY
AT THE UNIVERSITY OF ULM, GERMANY**

Courses Offered:

Introductory Methods in Epidemiology

Paul Sorlie

National Institutes of Health (NIH), Bethesda, MD, USA

Multivariate Analysis

Jay Kaufman

University of North Carolina at Chapel Hill, NC, USA

Cardiovascular Disease Epidemiology

Gerardo Heiss

University of North Carolina at Chapel Hill, NC, USA

Genetic Epidemiology

Michael A. Province

Washington University, St. Louis, MO, USA

Date: June 30 – July 4, 2003

Location: University of Ulm / Germany

Language: English

Fees: € 200,- per course participation fee (€ 150,- for members of the German Epidemiological Association DAE; € 75,- for students)

Program Director: Prof. Dr. med. Stephan Weiland

For further information
please contact: Daniela Oesterle
Dept. of Epidemiology / University of Ulm
Helmholtzstr.22
D-89081 Ulm
Phone.: ++49 731 50 31064 (9.00 – 12.00 am)
Fax: ++49 731 50 31069
Email: daniela.oesterle@medizin.uni-ulm.de

Deadline for application: May 31, 2003